

# 660SJ HC3

TELESCOPIC HI-CAPACITY BOOM LIFT



## Performance

Platform Height	20.02 m
Horizontal Outreach	17.40 m
Swing	360 Degrees Continuous
Platform Capacity	
660SJ HC3 – Restricted	340/454 kg
660SJ HC3 – Unrestricted	300 kg
Platform Rotator	180 Degrees Hydraulic
Jib Range of Articulation	130 Degrees (+70, -60)
Weight	13,500 kg
Drive Speed 4WD	6.1 kph
Gradeability 4WD	45%
Tilt Cut Out	5 Degrees
Axle Oscillation	0.2 m
Turning Radius	
Inside	2.92 m
Outside	5.89 m

## Standard Specifications

### Power Source

Engine	Deutz D2011LO4 Tier 4i (49 hp 36.4 kw)
Fuel Tank Capacity	117 L

### Hydraulic System

Capacity	129 L
Auxiliary Power	12V DC

### Tyres

Non-Marking	IN355/55D-6.25 Foam Filled
-------------	----------------------------

## Standard Features

- Oscillating Axle
- 4WD
- Non-Marking Tyres
- Generator including AC Outlets to Platform and ELCB
- 180 Degree Hydraulic Platform Rotator
- 5 Degree Tilt Alarm/Indicator Light
- Swing-Out Engine Tray
- Flashing Amber Beacon
- 12V-DC Auxiliary Power
- Hourmeter
- Horn
- Control ADE® System
- Proportional Controls
- Gull-Wing Engine Hood
- Self-Closing Self-Locking Gate
- LED Light Panel at Platform and Ground Control Consoles
- Status Light Panel\*
- Lifting/Tie Down Lugs
- All Motion Alarm
- Glow Plugs (Diesel Engines)
- Load Sensing System
- SkyGuard SkyLine
- AS/NZS 1418.10 Compliance

\* Provides indicator lights at platform and ground control consoles to show system distress, 5 degree tilt light, and foot switch status.

3 Capacity Zones - Each rated for 3 occupants + tools/materials



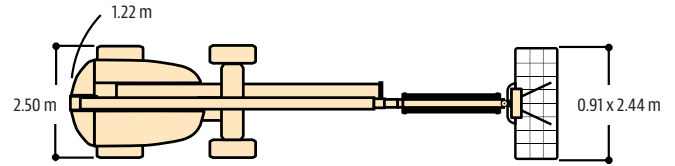
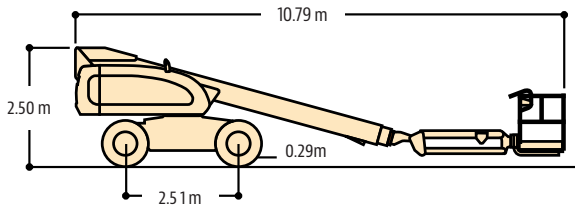
# HC3

## Accessories & Options

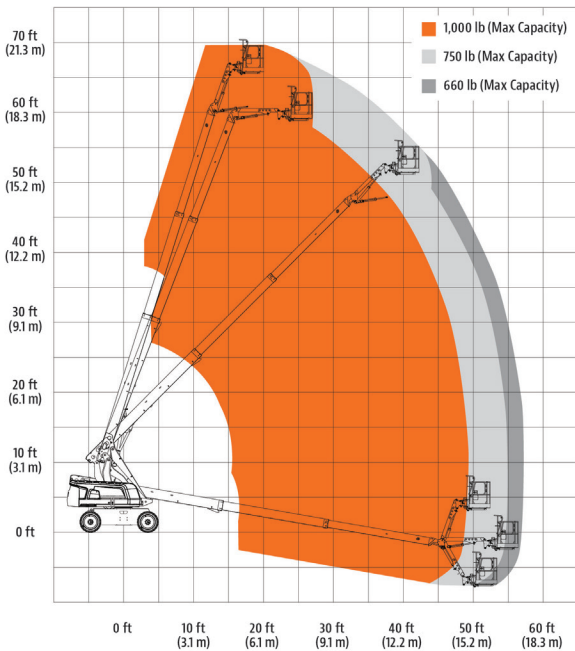
- Platform: 36 x 72 in. (0.91 x 1.83 m)
- SkySense™
- Mesh to Mid Rail
- Fire Extinguisher
- White Noise (Squawker) Alarm
- Pipe Racks
- SkyGlazier
- Bolt on Fall Arrest
- Battery Isolator

## Dimensions

All dimensions are approximate.



## Reach Dimensions



## The JLG "1 & 5" Warranty

JLG Industries, Inc. backs its products with its exclusive "1 & 5" Warranty. We provide coverage on all products for one (1) full year and cover all specified major structural components for five (5) years. Due to continuous product improvements, we reserve the right to make specification and/ or equipment changes without prior notification. This machine meets or exceeds AS/NZS 1418.10 2011 as originally manufactured for intended applications.